
Mundel-Flemingov model

Prof. Maja Baćović

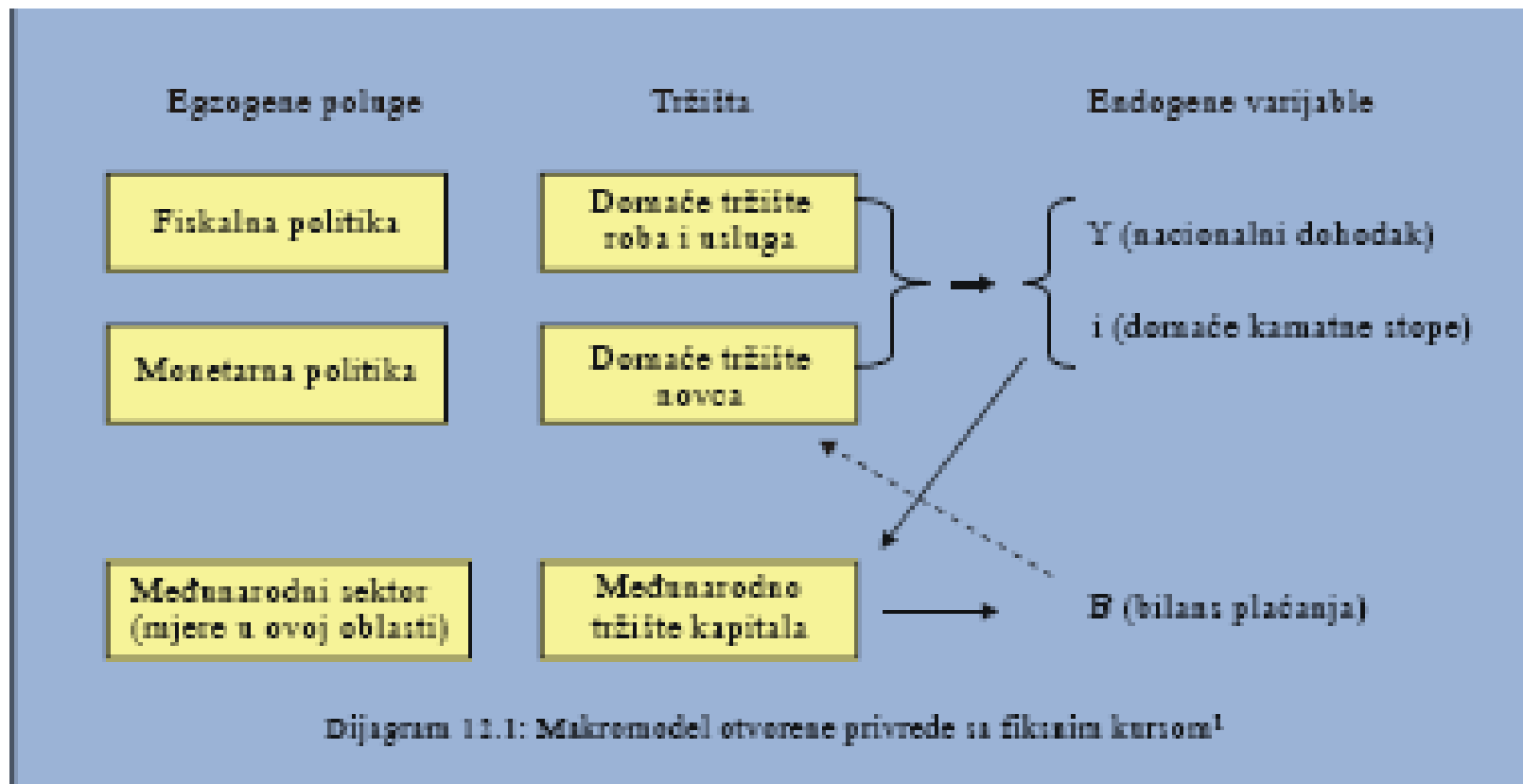
23.11.2021.

IS-LM u otvorenoj ekonomiji

- Spoljna ravnoteža
- Unutrašnja ravnoteža

IS-LM u otvorenoj ekonomiji

Mundel-Flemingov model



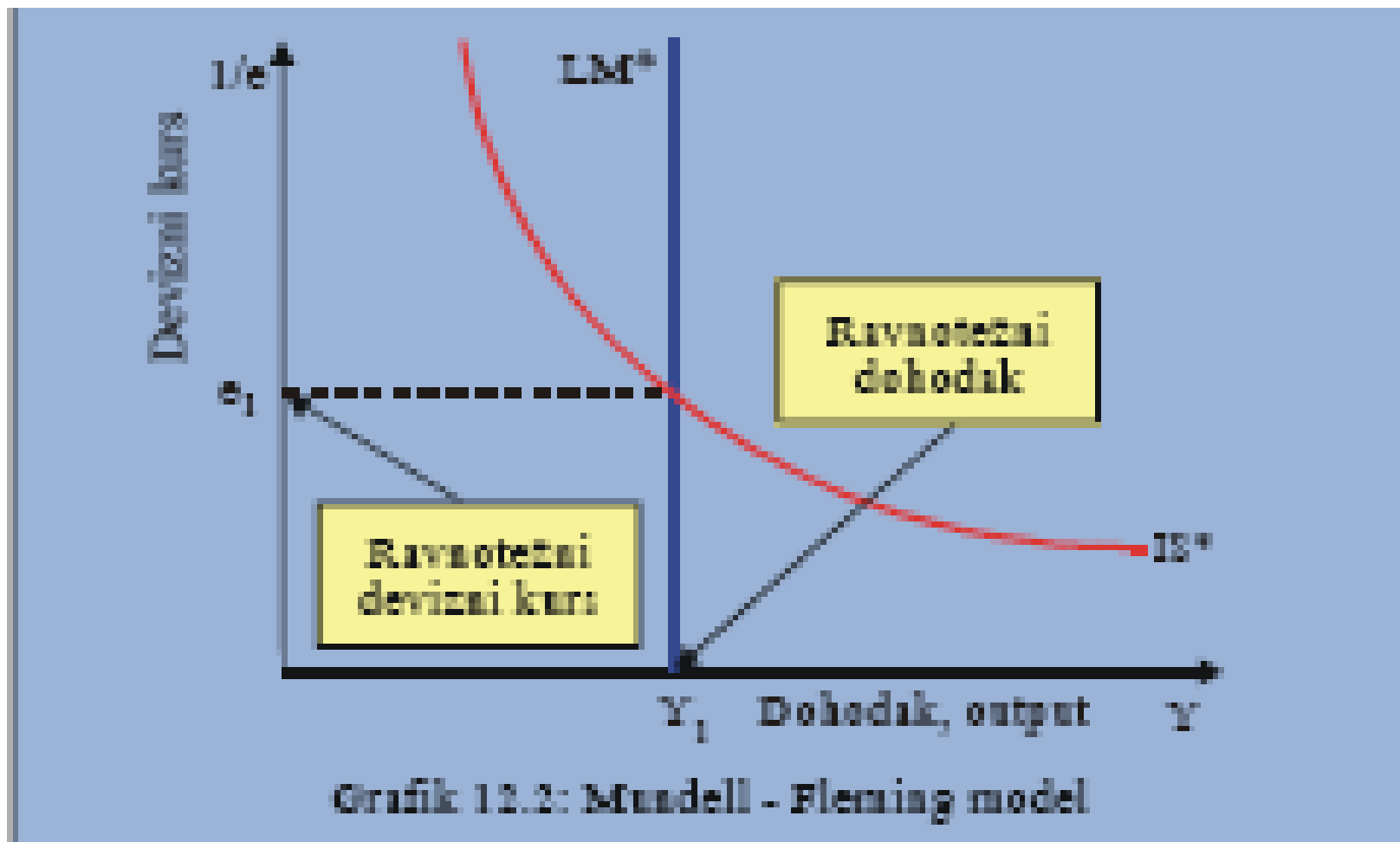
IS-LM-BP

$$Y = C(Y-T) + I(r^*) + G + SST(e) \quad \text{..IS}$$

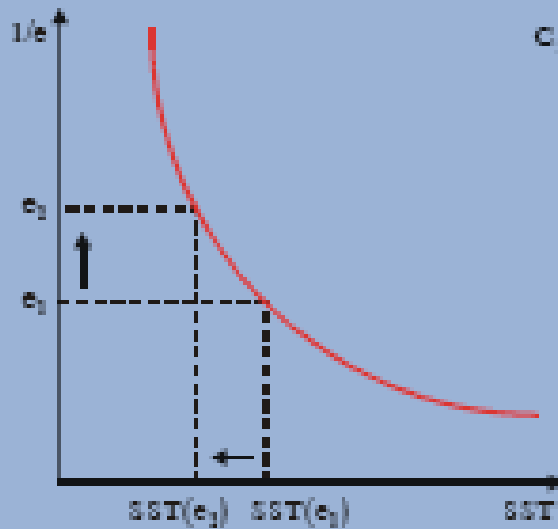
$$M/P = L(r, Y) \dots\dots\dots \text{LM}$$

$$r = r^*$$

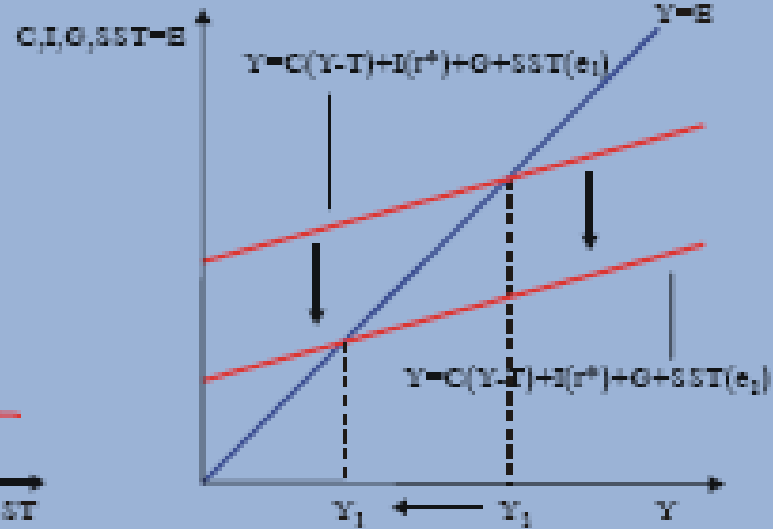
IS-LM-BP



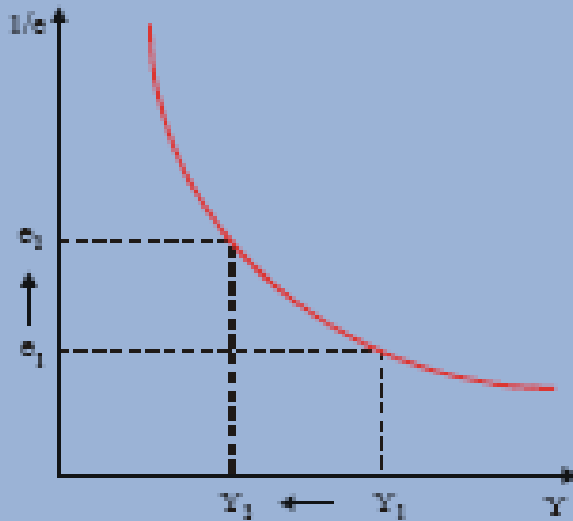
a) Uticaj deviznog kursa na SST



b) Kežarski dijagram

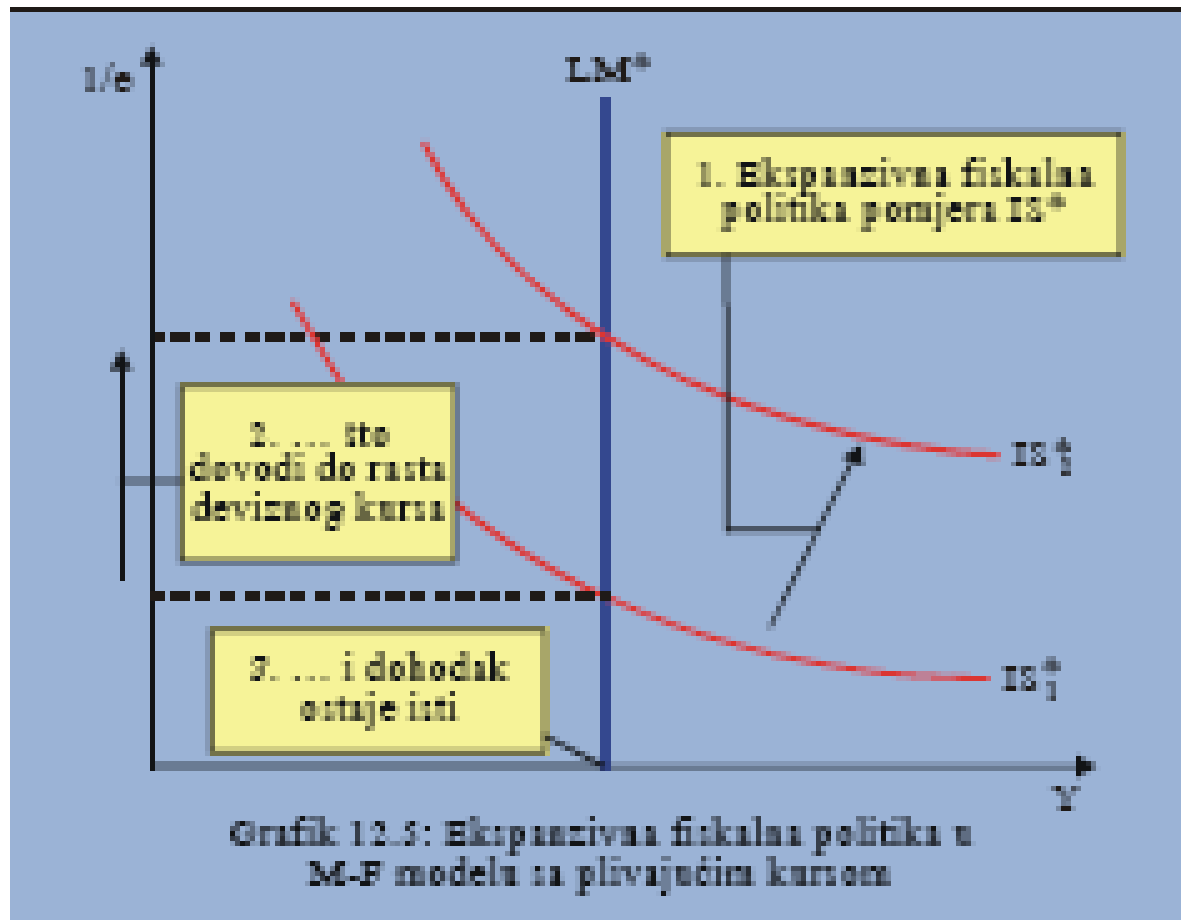


c) IS* kriva

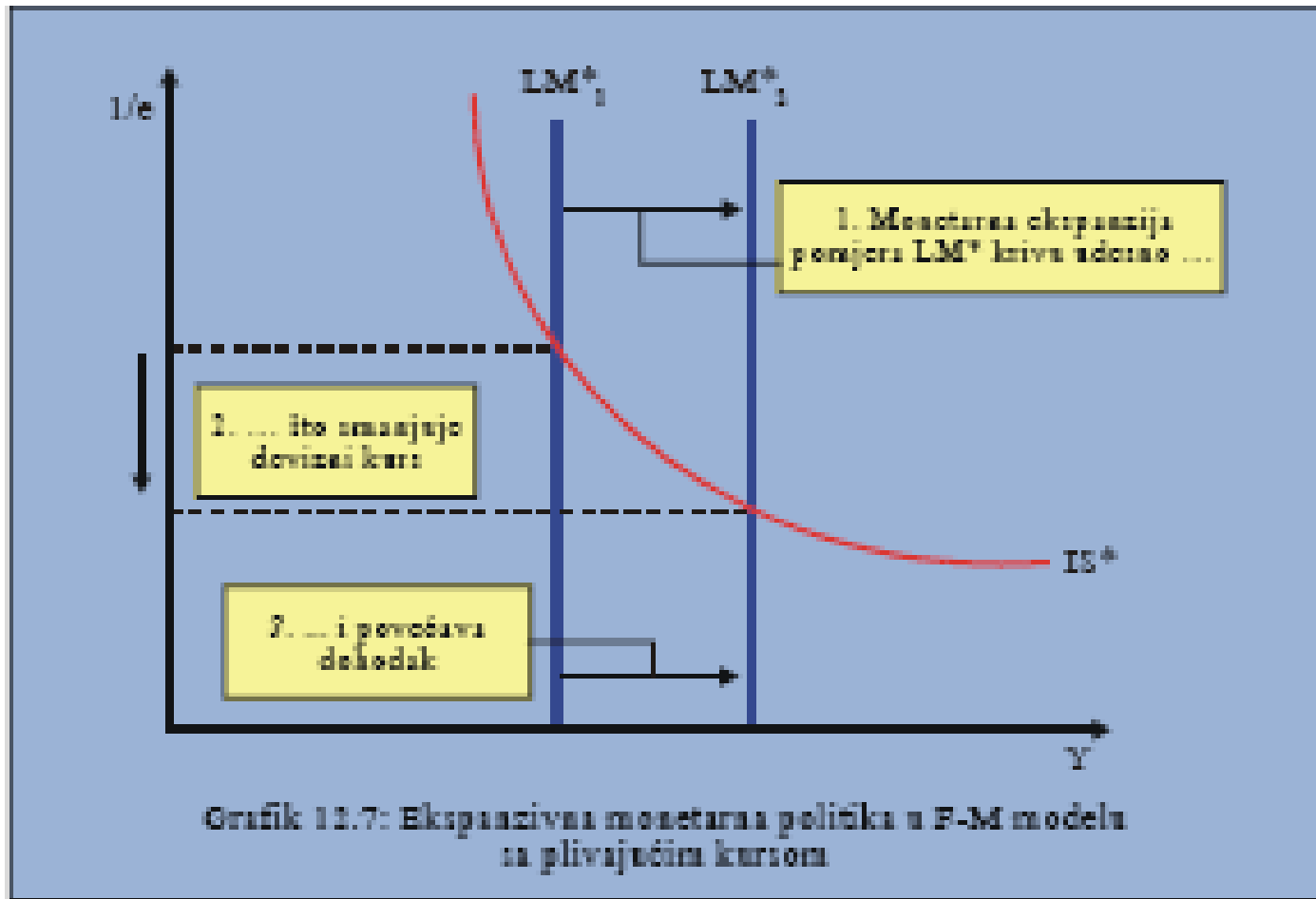


Grafik 12.4: IS* kriva

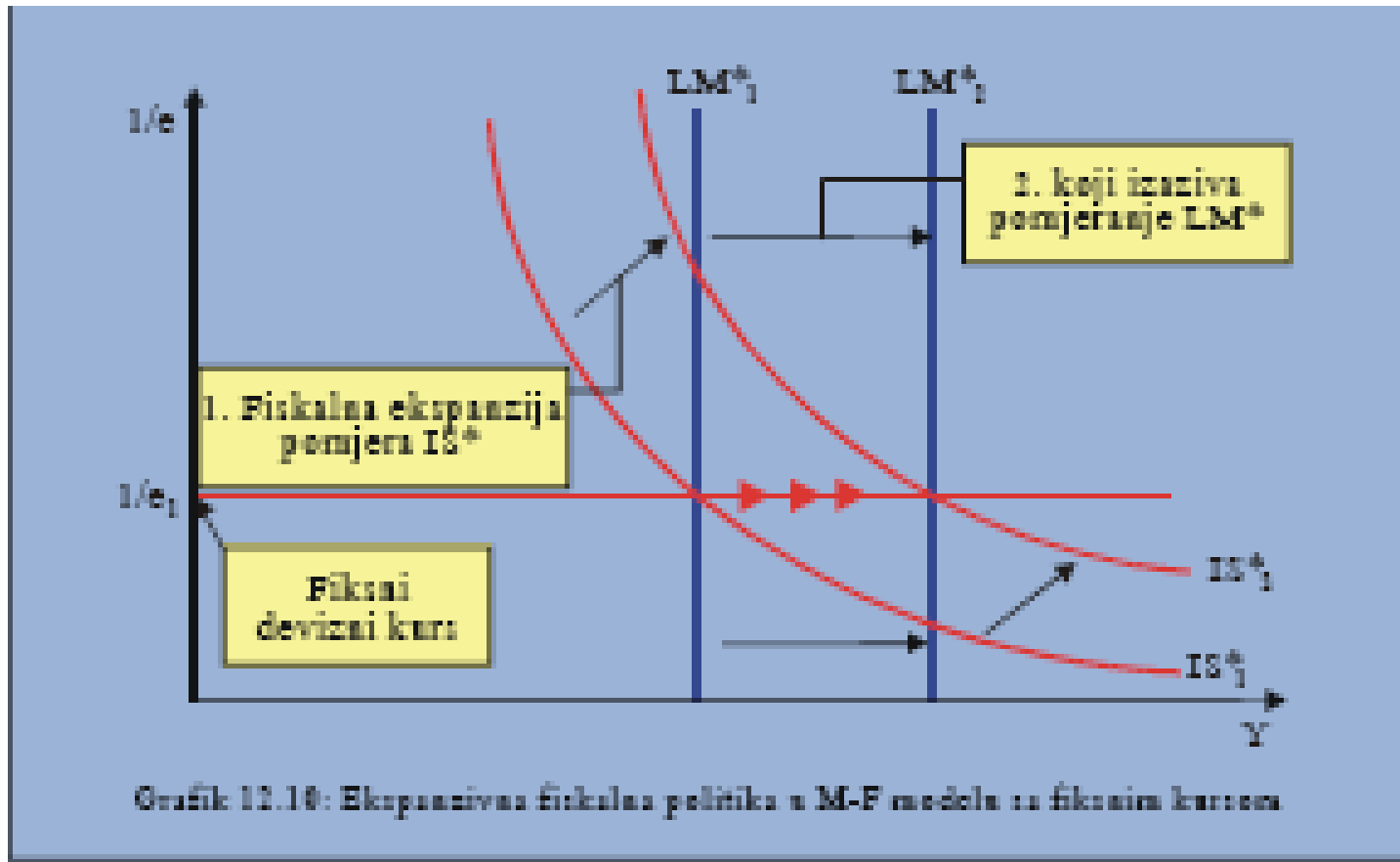
Otvorena privreda i plivajući devizni kurs



Otvorena privreda i plivajući devizni kurs

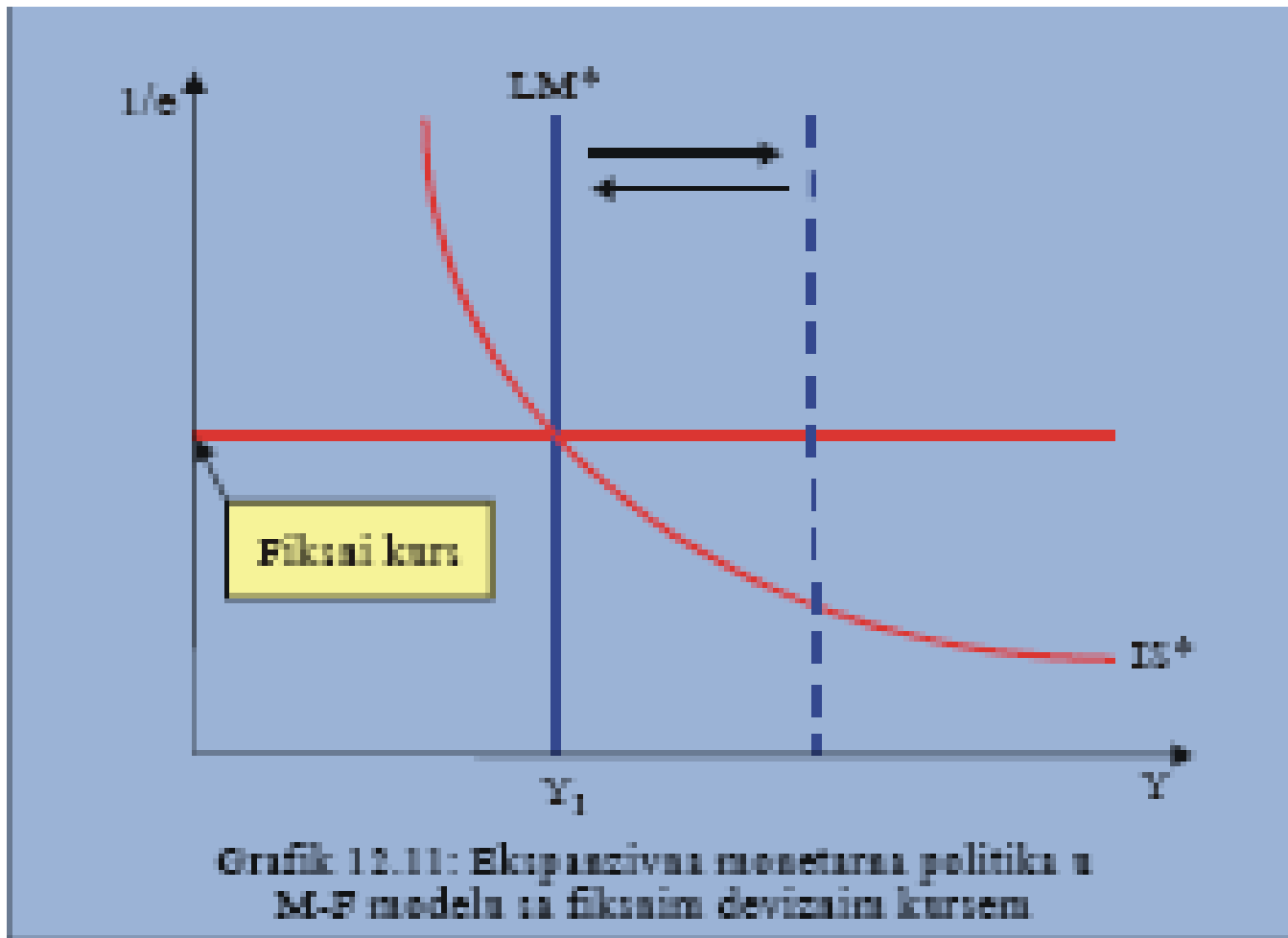


Otvorena privreda i fiksni devizni kurs



Grafik 12.10: Ekspanzivna fiskalna politika u M-F modelu sa fiksnim kursom

Otvorena privreda i fiksni devizni kurs



Mundell-Flemingov model